



# The Only *No-Maintenance* Closed Crankcase Breather for Caterpillar® Diesel Engines.



CAT® and Caterpillar® are registered trademarks of Caterpillar, Inc.





Caterpillar® 3116TA-Factory Option



Caterpillar® 3126TA-Standard



Caterpillar® 3208 Classic-Standard



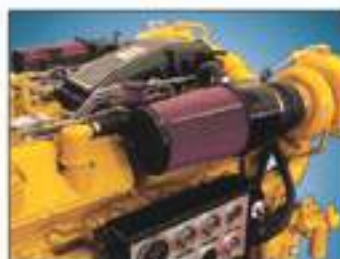
Caterpillar® 3176-Standard



Caterpillar® 3408TA-Standard



Caterpillar® 3412TA-Standard



Caterpillar® 3412TA-Standard

*AIRSEP Breathers for your Caterpillar® engine are available with an optional built-in turbo silencer to damper the high-pitch whine associated with most modern turbo-charged engines, and a high-quality, reusable marine air filter.*

## The AIRSEP® Advantage...

The Walker AIRSEP Breathing System is the best closed-crankcase system available today. Unlike other breather systems on the marine market, the Walker AIRSEP is the only maintenance-free air-oil separator/breather that truly works! That is why all of the major diesel manufacturers have made the Walker AIRSEP their exclusive breather as standard factory equipment on most of their marine diesels.

## Direct Benefits...

Eliminating oily crankcase breather discharge that may blow directly into your bilge and all over your engine room, the AIRSEP provides these great benefits —

- ▶ No more oil in the bilge or noxious fumes.
- ▶ Saves oil and fuel consumption.
- ▶ Sustains engine r.p.m. performance.
- ▶ No more costly filter elements to buy each year.
- ▶ Helps reduce or eliminate seal leaks on older engines.
- ▶ Extends time between engine overhauls.
- ▶ Helps avoid costly Coast Guard bilge fines.

## Easy-to-Install AIRSEP Kits for Caterpillar® Engines

AIRSEP Kit No.	CATERPILLAR® Engine Models
KW3116-1	3116TA, Single turbo, aftercooled
KW3126-1	3126TA, Single turbo, aftercooled
KW3208-N (210)	3208, Naturally aspirated
KW3208-1 (320)	3208T, Single turbo
KW3208-1 (375)	3208TA, Single turbo, aftercooled
KW3208-1 (425/435)	3208TA, Single turbo, aftercooled
KW3304-1	3304, Single turbo, w-w/o aftercooler
KW3306B-1	3306, Single turbo, w-w/o aftercooler
KW3406-1	3406, Single turbo, w-w/o aftercooler
KW3408-1	3408, Single turbo, w-w/o aftercooler
KW3408-2	3408TA, Dual turbo, aftercooled
KW3412-1	3412, Single turbo, w-w/o aftercooler
KW3412-2	3412TA, Dual turbo, aftercooled

*AIRSEP Kits are also available for other Caterpillar® Diesel engines, as well as older engines. Please contact Walker Engineering for pricing and availability.*

*Note: Turbo connection hoses are required for each kit, except the 3116TA. These hoses are listed on the accessory literature and are available for a nominal charge.*

*See accessory parts sheet for turbo silencer kits, parts, and air filter cleaning kits.*

**Specify a Walker AIRSEP on your new Caterpillar®-powered vessel...or call your local Caterpillar®/AIRSEP dealer about a retrofit kit for your existing engine.**



**Walker Engineering Enterprises**  
8321 De Celis Place • North Hills, CA 91343  
Tel: (818) 895-7788 • FAX: (818) 895-7785



WE-CT-96



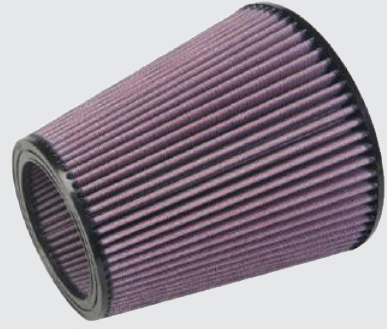
## AIR FILTER (9Dia x 12L) TAPERED - HAVA FİLTRESİ KONİK CAT.



Fiyat Kodu/  
Price Code  
CD197

Kod / Code	Ölçü / Size	Açıklama / Description
Part# CD197	(9Dia x 12L)	This filter is 12" long.

## AIR FILTER (9Dia x 9L) TAPERED - H. FİLTRESİ KONİK CAT



Fiyat Kodu/ Price Code CD196

Kod / Code	Ölçü / Size	Açıklama / Description
Part# CD196	(12Dia x 10L)	This filter is 9" long.

## AIRSEP RECON KIT ( Flex Hose 1 1/4")-RECON KIT (Flex Hortum )



Fiyat Kodu/  
Price Code

Kod / Code	Ölçü / Size	Açıklama / Description
Part# KWR2016003	1 1/4"	1 1/4" breather hose.

## AIRSEP RECON KIT (90 Degree Hoses)-(90 Derece Hortum)



Kod / Code	Ölçü / Size	Açıklama / Description
Part # KWR2016001	(90 Degree )	90 degree 1 1/4" hoses

## AIRSEP RECON KIT (PR2000 Regulator Upgrade) - AIRSEP RECON KIT (PR2000 Regülatör Yükseltme)



Fiyat Kodu/ Price Code KWR2016004

Kod / Code	Açıklama / Description
Part# KWR2016004	This kit includes two (2) PR2000 vacuum regulators, two (2) 1 1/4" 90 degree silicone hoses, and (4) marine grade stainless steel hose clamps.

## AIRSEP RECON KIT (VR1000 Regulators) -Part# KWR2016009 -AIRSEP RECON KIT (VR1000 Düzenleyiciler) -Part # KWR2016009



Fiyat Kodu/ Price Code KWR2016009

Kod / Code	Açıklama / Description
Part# KWR2016009	This kit includes two (2) VR1000 vacuum regulators, two (2) 1 1/4" 90 degree hoses, and (4) marine grade stainless steel hose clamps.

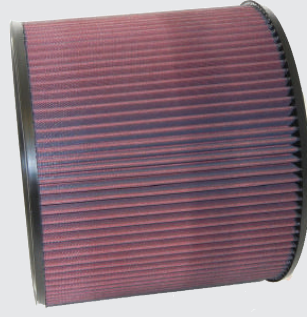
AIR FILTER (7.5 Dia x 10L) TAPERED - HAVA FİLTRESİ KONİK CAT.



Fiyat Kodu/  
Price Code  
CD190

Kod / Code	Ölçü / Size	Açıklama / Description
Part# CD190	(7.5 Dia x 10L)	This filter is 10" long.

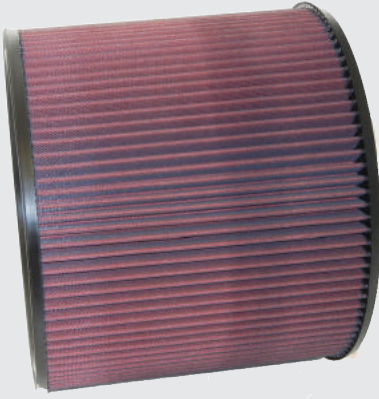
AIRSEP AIR FILTER (12 Dia x 10L) STRAIGH - DUZ / CAT.



Fiyat Kodu/ Price Code GFD0101

Kod / Code	Ölçü / Size	Açıklama / Description
Part# CD204	(12Dia x 10L)	This filter is 10" long.

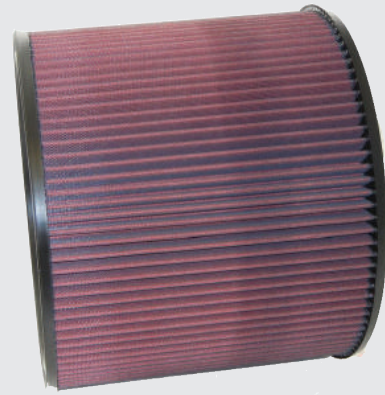
AIRSEP AIR FILTER (12Dia x 6L) STRAIGHT - DÜZ / CAT.



Fiyat Kodu/  
Price Code  
CD203

Kod / Code	Ölçü / Size	Açıklama / Description
Part# CD203	(12Dia x 6L)	This filter is 6" long.

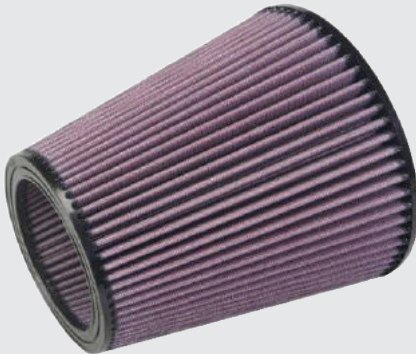
AIRSEP AIR FILTER (12Dia x 7L) STRAIGHT - DÜZ / CAT.



Fiyat Kodu/ Price Code CD186

Kod / Code	Ölçü / Size	Açıklama / Description
Part# CD186	(12Dia x 7L)	This filter is 7" long.

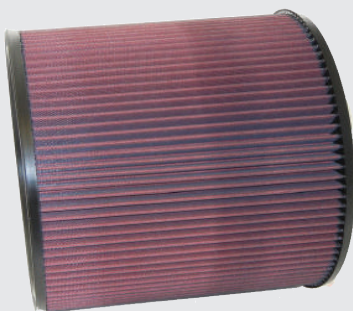
AIRSEP AIR FILTER (7.5 Dia x 8L) TAPERED - AIRSEP HAVA FİLTRESİ (7.5 Dia x 8L) KONİK - Part# CD195



Fiyat Kodu/ Price Code GRD0109

Kod / Code	Ölçü / Size	Taban / Base
Part# CD195	(7.5 Dia x 8L)	This filter is 8" long.

AIRSEP AIR FILTER (12Dia x 8L) STRAIGHT -Part# CD187 - AIRSEP HAVA FİLTRESİ (12 Dia x 8L) DÜZ -PART # CD187



Fiyat Kodu/ Price Code GFD0105

Kod / Code	Ölçü / Size	Açıklama / Description
Part# CD187	(12 Dia x 8L)	This filter is 8" long.



## AIRSEP REGULATOR FILTER - AIRSEP REGÜLATÖR FİLTRESİ



Kod / Cod	Açıklama / Description
Part# CD180	REGULATOR FILTER

Fiyat Kodu/ Price Code CD180

## CCE AIRSEP AIR FILTER (10Dia x 9L)TAPERED - H. FİLTRESİ KONİK



Kod / Code	Ölçü / Size	Açıklama / Description
Part# 40-1051	(10Dia x 9L)	This filter is 9" long.

Fiyat Kodu/ Price Code 40-1051

## CCE FIELD SERVICE KIT 10" XL AIRSEP COALESCER 2 PAK (3") - CCCE FIELD SERVICE KIT 10" XL AIRSEP COALESCER 2 PAK (4")



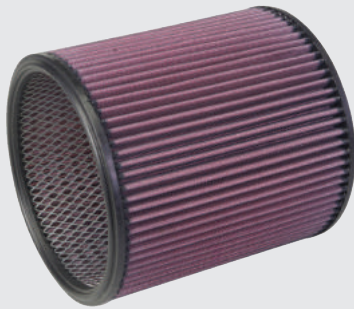
Fiyat Kodu/ Price Code 1002332

Kod / Code	Ölçü / Size	Açıklama / Description
Part# 1002332	(3")	Kit uses the standard 3" diameter first stage filters.
Part# 1002300	(4")	Kit uses the standard 4" diameter first stage filters.



Fiyat Kodu/ Price Code 1002300

## CCV AIR FILTER (7.15 Dia x 10.25L) CLOSED END FILTER -CCV AIR FILTER (8.78 Dia x 10.32L) CLOSED END FILTER - KAPALI UÇLU

Fiyat Kodu/  
Price Code

40-1194

40-1195

Kod / Code	Ölçü / Size	Açıklama / Description
Part# 40-1194	(7.15 Dia x 10.25L)	This filter has a "closed" end.
Part# 40-1195	(8.78 Dia x 10.32L)	This filter has a "closed" end.



Caterpillar® 3116TA-Factory Option



Caterpillar® 3126TA-Standard



Caterpillar® 3208 Classic-Standard



Caterpillar® 3176-Standard



Caterpillar® 3408TA-Standard



Caterpillar® 3412TA-Standard



Caterpillar® 3412TA-Standard

AIRSEP Breathers for your Caterpillar® engine are available with an optional built-in turbo silencer to dampen the high-pitch whine associated with most modern turbo-charged engines, and a high-quality, reusable marine air filter.

## CCE FIELD SERVICE KIT 12" AIRSEP COALESCER 2 PAK - CCE SAHA SERVİS KİTİ 12 "AIRSEP COALESCER 2 PAK



Fiyat Kodu/  
Price Code  
1000821

Kod / Code  
Part# 1000821

Ölçü / Size  
(12")

Açıklama / Description

Each convenient (TWO-PAK) kit contains: Two internal coalescer filter sets and the first stage filters for either C30 or C32 systems, and two replacement o-ring sets.



Replacement Code - Değişirme Kodu / Caterpillar

Caterpillar AIRSEP coalescer part# 207-7469 2077469, 270-7257, 2707257.

## CHROME OIL FILTER COVER (CAT C32-3512-3516 & More) KROM YAĞI FİLTRE KAPAĞI (CAT C32-3512-3516 & Daha Fazlası)



Fiyat Kodu/ Price Code 1000859

Kod / Code  
Part# 1000859

Covers are available for the following engine models: C9, 3176, 3196, C12, 3406 3406C, 3406E, C15, C18, 3408, 3412, 3412C 3412D, 3412D, 3412E, C30, C32



Fiyat Kodu/ Price Code 1000858

Kod / Code  
Part# 1000858

Covers are available for the following engine models: C9, 3176, 3196, C12, 3406 3406C, 3406E, C15, C18, 3408, 3412, 3412C 3412D, 3412D, 3412E, C30, C32

## SERVICE KIT - CATERPILLAR C18 Marine Engine SERVİS KİTİ - CATERPILLAR C18 Deniz Motoru

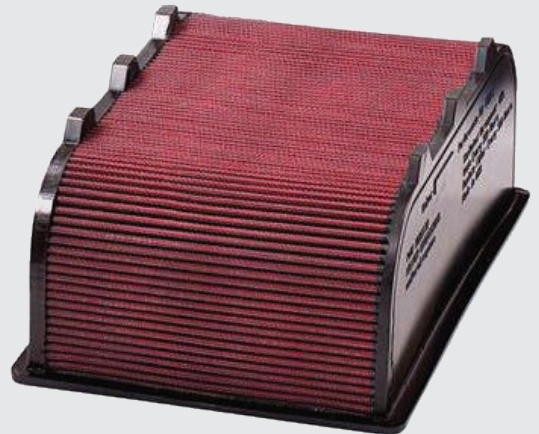


Kod / Code  
Kit # 1001141

Replacement Code / CAT air filters:  
Değişirme Kodu / Caterpillar  
CAT part# 177-7375  
CAT part# 251-7222 (1777375, 2517222)

Fiyat Kodu/ Price Code 1001141

## HIGH - AIR PERFORMANCE AIR FILTER (CAT 3208 425HP-450HP) YÜKSEK HAVA PERFORMANSI HAVA FİLTRESİ (CAT 3208 425HP-450HP)



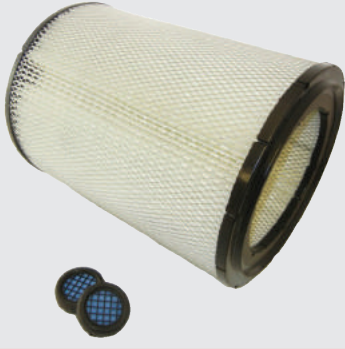
Kod / Code  
Part# 1001132

Fiyat Kodu/ Price Code 1001132

The special design of this filter allows high air flow and a quick and easy installation without modifying the engine air intake box. Measures 14" x 12". (425-450HP rated engines only)



## CCE 16" AIRSEP COALESCER FILTER -16" BİRLEŞTİRİCİ FİLTRE

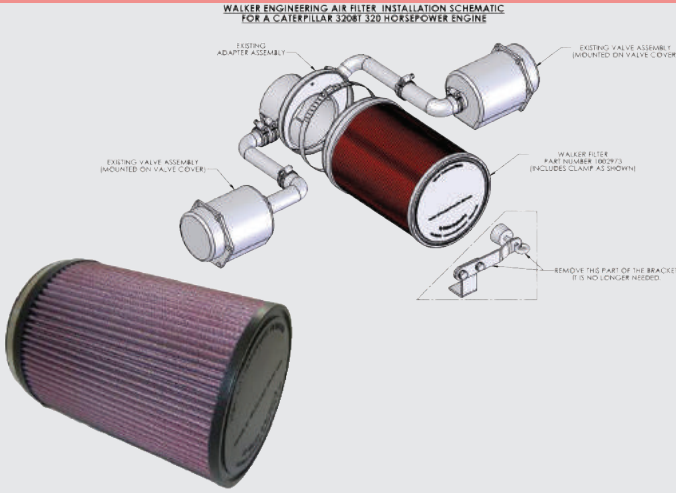
Fiyat Kodu/  
Price Code

Kod / Code	Ölçü / Size	Açıklama / Description
Part# 40-2011 & 40-2018	(16")	This filter is 16" long.

HIGH - AIR PERFORMANCE AIR FILTER(CAT 3208 375HP)  
YÜKSEK HAVA PERFORMANSI HAVA FİLTRESİ (CAT 3208 375HP)

Fiyat Kodu/ Price Code 1001094

Kod / Code	Ölçü / Size	Açıklama / Description
Part# 1001094	14" x 12"	(375 HP rated engines only) Caterpillar 3208TA diesel engine

HIGH - AIR PERFORMANCE AIR FILTER (CAT 3208T 320HP)  
YÜKSEK HAVA PERFORMANSI HAVA FİLTRESİ (CAT 3208T 320HP)Fiyat Kodu/  
Price Code

Kod / Code	Ölçü / Size	Açıklama / Description
Part# 1002973	9.9" x 7"	Caterpillar 3208T diesel engine."

WALKER AIRSEP PARTS (Vacuum Regulator) -Part# VR1000  
WALKER AIRSEP PARÇALARI (Vakum Regülatörü) -Part # VR1000

Fiyat Kodu/ Price code KWR2016001

Kod / Code	Açıklama / Description
Part # VR1000	(Vacuum Regulator)

## WALKER AIRSEP PARTS (Vacuum LIMITER) -Part# AJ960-3 - WALKER AIRSEP PARÇALARI (Vakum SINIRLAYICI) -Part # AJ960-3



Fiyat Kodu/ Price Code AJ960-3

Kod / Code	Açıklama / Description
Part # AJ960-3	Caterpillar 3196TA engines and select Detroit Diesel models.

Direct Replacement for Caterpillar # 4P-92932 or 4P9232  
Direkt değişim Caterpillar numarası # 4P-92932 or 4P9232

## Walker AIRSEP Parts (Vacuum Regulator CCE) -Part# PR200209 - Walker AIRSEP Parts (Vacuum Regulator) -Part# PR2000

Fiyat Kodu/ Price Code PR2000

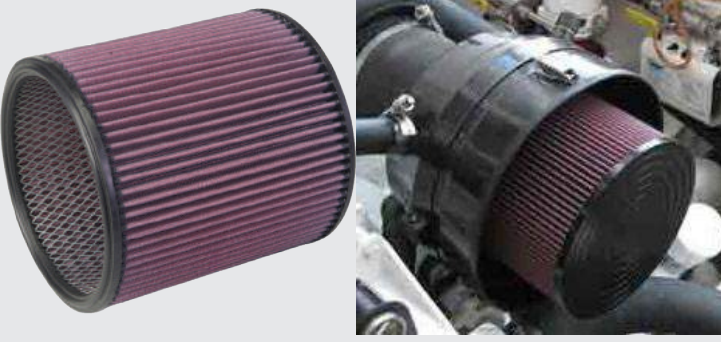


Kod / Code	Açıklama / Description
Part# PR2000	(Vacuum Regulator)
Part# PR2002	(Vacuum Regulator)

Fiyat Kodu/ Price Code PR2002



### CCV Air Filter (7.15 Dia x 10.25L) Closed End Filter -Part# 40-1194



Fiyat Kodu/  
Price Code

40-1194

Kod / Code

Part# 40-1194

Ölçü / Size

7.15" diameter 10.25" long

Açıklama / Description

John Deere part# RE527920

### CCV Air Filter (8.78 Dia x 10.32L) Closed End Filter -Part# 40-1195



Fiyat Kodu/ Price Code 40-1195

Kod / Code

Part# 40-1195

Ölçü / Size

(8.78 Dia x 10.32L)

Açıklama / Description

John Deere filter# RE502014

### High-Air Performance Air Filter 4" Inlet (6Dia x 9L) Tapered



Fiyat Kodu/  
Price Code

40-1200

Kod / Code

Part# 40-1200

Ölçü / Size

(6Dia x 9L)

Açıklama / Description

John Deere filter# RE502014

### High-Air Performance Air Filter 3" Inlet (8.5 Dia x 12.25L)



Fiyat Kodu/ Price Code 1000956

Kod / Code

Part# 1000956

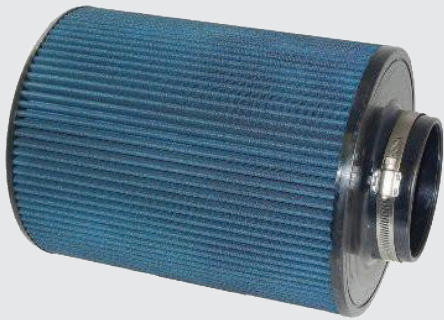
Ölçü / Size

(8.5 Dia x 12.25L)

Açıklama / Description

Measures 8.5" diameter x 12.25" long. Fits 3" turbo/inlet.

### High-Air Performance Air Filter 4" Inlet (10.25 Dia x 11.7L) - Yüksek Hava Performanslı Hava Filtresi 4 "Giriş (10.25 Dia x 11.7L)



Fiyat Kodu/ Price Code 1000946

Kod / Code

Part# 1000946

Ölçü / Size

(10.25 Dia x 11.7L)

Taban / Base

Measures 10.25" diameter x 11.7" long. Fits 4" Turbo/Inlet.

### High-Air Performance Air Filter 4" Inlet (8.5 Dia x 12.25L) - Yüksek Hava Performanslı Hava Filtresi 4 "Giriş (8.5 Dia x 12.25L)



Fiyat Kodu/ Price Code 100095

Kod / Code

Part# 1000951

Ölçü / Size

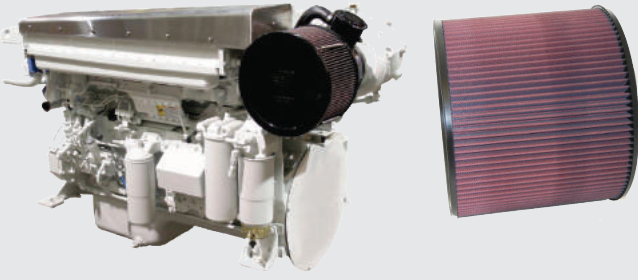
(8.5 Dia x 12.25L)

Açıklama / Description

Measures 8.5" diameter x 12.25" long. Fits 4" Turbo/Inlet.



## WALKER AIRSEP HAVA FİLTESİ - ALASKA DIESEL WALKER AIRSEP AIR FILTER - ALASKA DIESEL



Kod / Code	Ölçü / Size	Açıklama / Description
Part# 40-1037	(13 Dia x 7L)	AIRSEP Air Filter Alaska Diesel 6125
Fiyat Kodu/ Price Code 40-1037		

## AIRSEP HAVA FİLTRESİ TEMİZLEME KİTLERİ - KIRMIZI YAĞ AIRSEP AIR FILTER CLEANING KITS - RED OIL



Fiyat Kodu/ Price Code	Kod / Code	Ölçü / Size	Açıklama / Description
DDF9016	Part# DDF9016		Air Filter Cleaning Kit
AAF1016	Part# AAF1016		Air Filter Cleaning Kit

## AIRSEP RECON KIT ( OIL DRAIN LINES ) -Part# KWR2016008 - AIRSEP RECON KİT (YAĞ BOŞALTMA HATLARI)-Part# KWR2016008



Fiyat Kodu/ Price Code GFD0077

Kod / Code	Açıklama / Description
Part# KWR2016008	This kit includes two (2) 8 foot sections of black Walker oil drain hose, two (2) AIRSEP oil drain check valves, two (2) sets swivel fittings 3/8" x 1/2" hose, and four (4) marine grade stainless steel hose clamps.

## AIRSEP REGULATOR FILTER - Part# CD180 - AIRSEP REGÜLATÖR FİLTRE - Part# CD180



Fiyat Kodu/ Price Code - CD180

Kod / Code	Açıklama / Description
Part# CD180	

## CCE FIELD SERVICE KIT 10" AIRSEP COALESCER 2 PAK CCE ALAN SERVİS KİTİ 10" AIRSEP COALESCER 2 PAK

Fiyat Kodu/ Price Code 1003026



Kod / Code	Açıklama / Description
Part# 1003026 (4")	The kit includes all parts required for complete servicing of two (2) 10" CCE AIRSEPS.

## WALKER AIRSEP TESTED TOOL- DIGITAL MANOMETER WALKER AIRSEP TEST ALETİ - DİJİTAL MANOMETRE



Fiyat Kodu/ Price Code	Kod / Cod	Açıklama / Description
ST500197	Part# ST500197	Digital Manometer can be used to measure low pressures from -20 to 20 in w.c. with ±1.5% FS accuracy

## WALKER AIRSEP - SPRING REMOVAL TOOL - WALKER AIRSEP - YAY SÖKME ALETİ



Fiyat Kodu/ Price Code ST500196

Kod / Code	Açıklama / Description
Part# ST500196	PWalker Engineering's spring removal tool is an excellent accessory to have onboard to help aid in removing the springs on the traditional AIRSEP units.

## SPRING PAK , 3-1/2" (3 Pak) -Part# CD3502 - FİLTRE YAYI , 3-1/2" (3 Pak) -Part# CD3502



Kod / Code	Ölçü / Size	Açıklama / Description
Part# CD3502	3-1/2"	FILTER SPRING
Part# CD3504	4-1/2"	FILTER SPRING
Kod / Code	Ölçü / Size	Açıklama / Description
Part# CD4506	5-1/2"	FILTER SPRING
Part# CD4510	7-1/2"	FILTER SPRING
Kod / Code	Ölçü / Size	Açıklama / Description
Part# CD4514	9-1/2"	FILTER SPRING

## WALKER AIRSEP PARTS (OIL DRAIN CHECKVALVE ) - WALKER AIRSEP PARÇALARI ( YAĞ TAHLİYE ÇEKVALFİ )



Fiyat Kodu/  
Price Code  
CD246

Kod / Code	Açıklama / Description
PART # CD246	Gold anodized finish. Checkvalve is directional dependent. 1/4" NPT Female inlet, 1/4" NPT Male outlet. Oil resistant construction with high reliability and cycle life.

## SEALING COMPOUND - Part# CD955 - SIZDIRMAZLIK BİLEŞENİ - Parça No. CD955



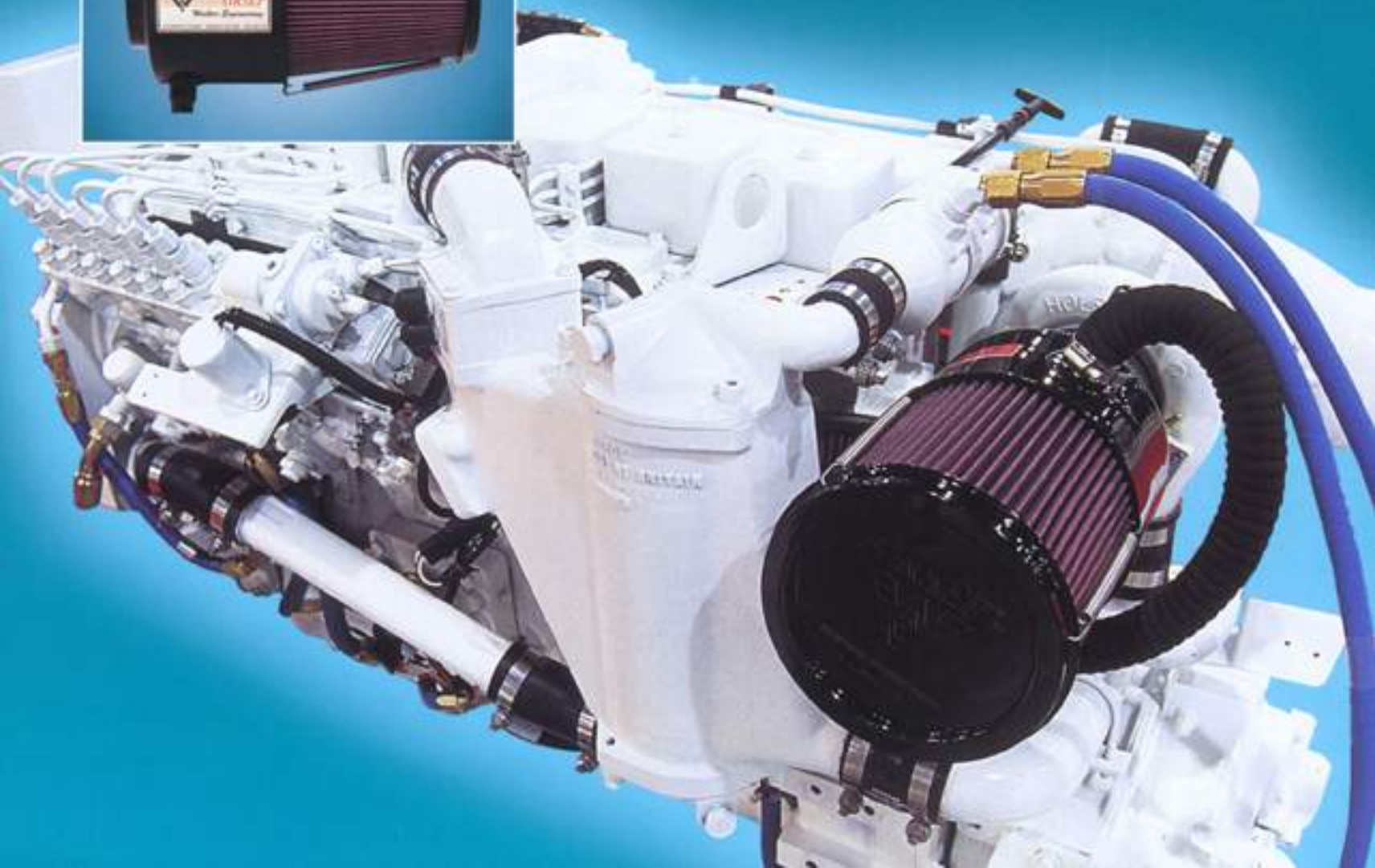
Fiyat Kodu/  
Price Code  
CD955

Kod / Code	Açıklama / Description
Part# CD955	Walker Engineering's air filter sealing compound is designed to ensure a high quality barrier to dirt or grime that might move past the air filter element in a high vacuum situation.





# The Only *No-Maintenance* Closed Crankcase Breather for Cummins® Diesel Engines.







Cummins® 4BT (150HP+)



Cummins® 6BT (210HP+)



Cummins® 6BTA JWAC (250 HP+)



Cummins® 6BTA SWAC (250 HP+)

## The AIRSEP® Advantage...

The Walker AIRSEP Breathing System is the best closed-crankcase system available today. Unlike other breather systems on the marine market, the Walker AIRSEP is the only maintenance-free air-oil separator/breather that truly works! That is why all of the major diesel manufacturers have made the Walker AIRSEP their exclusive breather as standard factory equipment on most of their marine diesels.

## Direct Benefits...

Eliminating oily crankcase breather discharge that may blow directly into your bilge and all over your engine room, the AIRSEP provides these great benefits —

- ▶ No more oil in the bilge or noxious fumes.
- ▶ Saves oil and fuel consumption.
- ▶ Sustains engine r.p.m. performance.
- ▶ No more costly paper filter elements to buy each year.
- ▶ Helps reduce or eliminate seal leaks on older engines.
- ▶ Extends time between engine overhauls.
- ▶ Helps avoid costly Coast Guard bilge fines.

*Most AIRSEP Breathers for your Cummins engines come with their own built-in turbo silencer to damper the high-pitch whine associated with most modern turbo-charged engines, and a high-quality, reusable marine air filter.*



Cummins® 6BTA (350 HP+)



Cummins® 6CTA (420 HP+)

## Easy-to-Install AIRSEP Kits for Cummins® Engines

AIRSEP Kit No.	CUMMINS® Engine Models
KW-3866535	4BT, Single turbo (to 150HP+)
KW-3866426	6BT, Single turbo (to 210HP+)
KW-3866425	6BTA, Single turbo (250-370HP)
KW-3897645	6BTA, Single turbo, V-Drive (250-370HP)
KW-3866450	6CTA, Single turbo (420HP+)

*AIRSEP Kits are also available for other Cummins Diesel engines, as well as older engines. Please contact Walker Engineering for pricing and availability.*

*Note: Turbo connection hoses may be required for other engine kits. These hoses are listed on the accessory literature and are available for a nominal charge.*

*See accessory parts sheet for parts and air filter cleaning kits.*

**Specify a Walker AIRSEP on your new Cummins®-powered vessel...or call your local Cummins/AIRSEP dealer about a retrofit kit for your existing engine.**



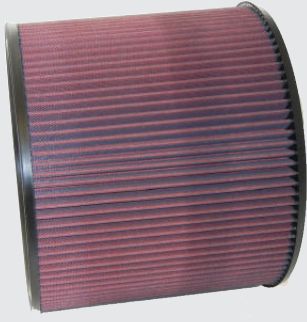
**Walker Engineering Enterprises**  
8321 De Celis Place • North Hills, CA 91343  
Tel: (818) 895-7788 • FAX: (818) 895-7785



WE-CM-96



## AIRSEP AIR FILTER (12Dia x 10L) STRAIGHT.- H.FİLTRESİ CUMMINS



Replacement Code:

Caterpillar: 136-7353 or 1367353  
 Detroit Diesel: 23512144  
 Cummins: 4003881

Fiyat Kodu/  
Price Code  
CD204

Kod / Code	Ölçü / Size	Açıklama / Description
Part# CD204	(12Dia x 10L)	This filter is 10" long.

AIRSEP Air Filter (7.5 Dia x 5L) Cummins 4BTA-6BTA  
AIRSEP Hava Filtresi (7.5 Dia x 5L) Cummins 4BTA-6BTA

Direct Replacement for Cummins part# 3866469.



Fiyat Kodu/ Price Code CD196

Kod / Code	Ölçü / Size	Açıklama / Description
Part# CD173	(7.5 Dia x 5L)	This filter is 5" long.

AIRSEP Air Filter (7.5 Dia x 6L) Cummins 6BTA -Part# CD174  
AIRSEP Hava Filtresi (7.5 Dia x 6L) Cummins 6BTA -Part # CD174

Direct Replacement for Cummins part# 3866492.

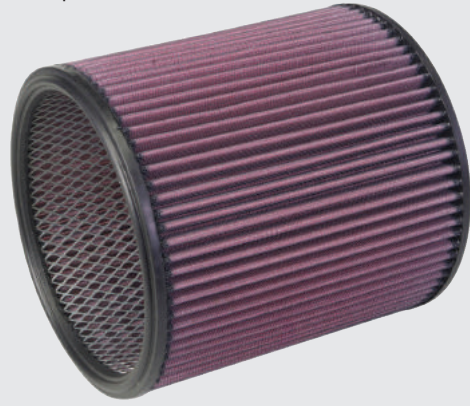


Fiyat Kodu/  
Price Code  
CD174

Kod / Code	Ölçü / Size	Açıklama / Description
Part# CD174	(7.5 Dia x 6L)	This filter is 6" long

AIRSEP Air Filter (7.5 Dia x 9L) Cummins 6CTA -Part# CD177  
AIRSEP Hava Filtresi (7.5 Dia x 9L) Cummins 6CTA -Part # CD177

Direct Replacement for air filter element in Walker Cummins 6CTA.



Fiyat Kodu/ Price code CD177

Kod / Code	Ölçü / Size	Açıklama / Description
Part# CD177	(7.5 Dia x 9L)	This filter is 9" long.

## AIRSEP Air Filter (7.5 Dia x 7L) Cummins 6BTA -Part# CD175 - AIRSEP Hava Filtresi (7.5 Dia x 7L) Cummins 6BTA -Part # CD175

Direct Replacement for Cummins part# 3897148.

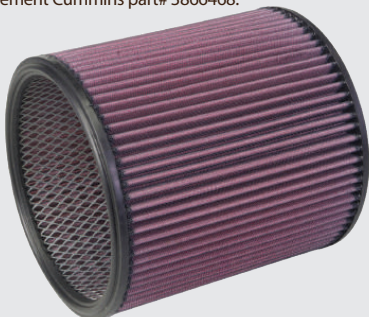


Fiyat Kodu/ Price Code CD175

Kod / Code	Ölçü / Size	Açıklama / Description
Part# CD175	(7.5 Dia x 7L)	This filter is 7" long

## AIRSEP Air Filter (7.5 Dia x 8L) Cummins 6CTA -Part# CD176 - AIRSEP Hava Filtresi (7.5 Dia x 8L) Cummins 6CTA -Part # CD176

Direct Replacement air filter element Cummins part# 3866468.



Fiyat Kodu/ Price Code KWR2016009

Kod / Code	Ölçü / Size	Açıklama / Description
Part# CD176	(7.5 Dia x 8L)	This filter is 8" long

AIRSEP Air Filter Cleaning Kit (BLUE Oil) -Part# BAF2016  
AIRSEP Hava Filtresi Temizleme Takımı (MAVİ YAĞ) -Part # BAF2016



Direct replacement for:  
Cummins air filter cleaning kit part# 3973523

Fiyat Kodu/  
Price Code  
BAF2016

Kod / Code  
Part# BAF2016

Açıklama / Description  
For BLUE tapered filters

AIRSEP Air Filter Cleaning Kit (Red Oil) -Part# DDF9016"  
AIRSEP Hava Filtresi Temizleme Takımı (Kırmızı Yağ) -Part # DDF9016



Direct replacement for:  
Caterpillar air filter cleaning kit part# 102-9720  
Cummins air filter cleaning kit part# 4003313

Fiyat Kodu/ Price Code DDF9016

Kod / Code  
Part# DDF9016

Açıklama / Description  
For RED tapered filters

AIRSEP RECON Kit (PR2000 Regulator Upgrade)  
AIRSEP RECON Kiti (PR2000 Regülatör Yükseltmesi)



Fiyat Kodu/  
Price Code  
KWR2016004

Kod / Code  
Part# KWR2016004

Açıklama / Description  
This kit includes two (2) PR2000 vacuum regulators, two (2) 1 1/4" 90 degree silicone hoses, and (4) marine grade stainless steel hose clamps.

Walker AIRSEP Parts (Restriction Indicator 15" 2-PAK)  
Walker AIRSEP Parçaları (Kısıtlama Göstergesi 15 "2-PAK)



Fiyat Kodu/ Price Code KWR2016005

Kod / Code  
Part # KWR2016005

Açıklama / Description  
Two (2) units per pak, Rated at 15" H2O (Ref# CD210)

AIRSEP RECON Kit (VR1000 Regulators) -Part# KWR2016009 - AIRSEP RECON Kiti (VR1000 Düzenleyiciler) -Part # KWR2016009



Fiyat Kodu/ Price Code KWR2016009

Kod / Code  
Part# KWR2016009

Açıklama / Description  
This kit includes two (2) VR1000 vacuum regulators two (2) 1 1/4" 90 degree hoses, and (4) marine grade stainless steel hose clamps.

Walker AIRSEP Parts (Restriction Indicator 25" 2-PAK) -Part# KWR2016007-Part# KWR2016006 / Kısıtlama Göstergesi



Fiyat Kodu/ Price Code GFD0105

Kod / Code  
Part# KWR2016007  
Part# KWR2016006

Ölçü / Size  
Two (2) units  
Two (2) units

Açıklama / Description  
Rated at 25" H2O  
Rated at 20" H2O



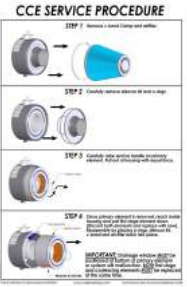
## CCE FIELD SERVICE KIT 10" x 6.5" QT Series Air Filter QSB



These filter elements are a direct replacement for Cummins air filters part# 5309235

Kod / Code	Ölçü / Size	Açıklama / Description
Part# 1003703	10" x 6.5"	Two (2) CCE 10" diameter x 8" Tall Air Filters and replacement o-rings.
Fiyat Kodu/ Price Code 1003703		

## CCE FIELD SERVICE KIT 8" AIRSEP (Cummins QSB)



Kod / Code	Ölçü / Size	Açıklama / Description
Part# 1000266	(8")	The kit includes all parts required for complete servicing of two 8" CCE AIRSEPS on a QSB engine.
Fiyat Kodu/ Price Code 1000266		

## CCE FIELD SERVICE KIT 8" AIRSEP COALESCER 2 PAK -Part# 1002032- CCE FIELD SERVICE KIT 8" AIRSEP COALESCER 4 PAK -Part# 1002030



Fiyat Kodu/ Price Code 1002332

Kod / Code	Ölçü / Size	Açıklama / Description
Part# 1002032	(8")	Complete servicing of four (4) 8" CCE AIRSEPS.
Part# 1002030	(8")	Complete servicing of four (4) 8" CCE AIRSEPS.

Fiyat Kodu/ Price Code 1002300



## EVERQUIET Air Filter Element -Cummins M11 660HP Max - EVERQUIET Air Filter Element -Cummins M11 700HP+ &amp; MAN 1550

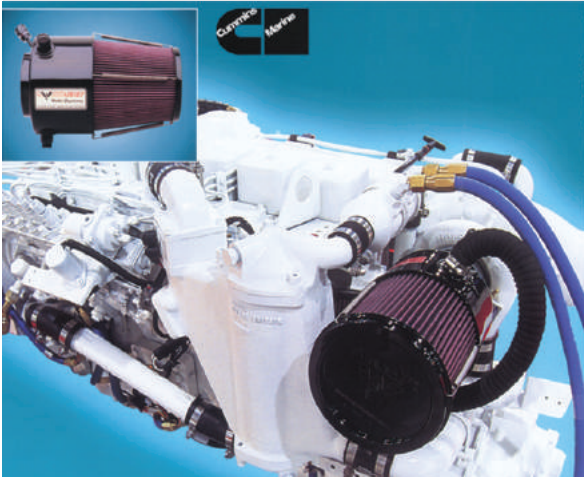


Fiyat Kodu/  
Price Code

40-1124

40-1132

Kod / Code	Ölçü / Size	Açıklama / Description
Part# 40-1124	Measures 9.5" Long	Cummins M11 660HP Max
Part# 40-1132	Measures 11.5" Long	Cummins M11 700HP Cummins No : 4930742



Cummins\* 4BT (150HP+)



Cummins\* 6BT (210HP+)



Cummins\* 6BTA JWAC (250 HP+)



Cummins\* 6BTA SWAC (250 HP+)

AIRSEP Kit No.	CUMMINS* Engine Models
KW-3866535	4BT, Single turbo (to 150HP+)
KW-3866426	6BT, Single turbo (to 210HP+)
KW-3866425	6BTA, Single turbo (250-370HP)
KW-3897645	6BTA, Single turbo, V-Drive (250-370HP)
KW-3866450	6CTA, Single turbo (420HP+)



Cummins\* 6BTA (350 HP+)



Cummins\* 6CTA (420 HP+)

EVERQUIET Air Filter Silencer "Arctic White" -Cummins M11 Marine Engine (Part # 90-1302W)- Hava Filtresi Susturucu "Arctic Beyaz"



Fiyat Kodu/  
Price Code  
90-1302W

Kod / Cod	Engine / Motor	Açıklama / Description
Part # 90-1302W	M11 diesel	Incorporates a metal housing to fit in same space as stock filter.Helps reduce high frequency turbo noise by 5-8 dBa.

Replacement Code - Değişirme Kodu / Caterpillar

Caterpillar AIRSEP coalescer part# 207-7469  
2077469, 270-7257, 2707257.

EVERQUIET Air Filter Silencer BLK -Cummins M11 Marine Engine  
EVERQUIET Hava Filtresi Susturucu BLK -Cummins M11 Deniz Motoru



Fiyat Kodu/ Price Code 90-1302

Kod / Code	Helps reduce high frequency turbo noise by 5-8 dBa. M11 marine diesel engine.
Part# 90-1302	

High-Air Performance Air Filter 3" Inlet (8.5 Dia x 12.25L) BL -Part# 1000956



Fiyat Kodu/ Price Code P1000956

Kod / Code	Measures 8.5" diameter x 12.25" long. Fits 3" turbo/inlet.Designed as a direct replacement for the stock paper air filter, the robust construction make it the ideal upgrade for your Cummins John Deere or other marine diesel engine.
Part# 1000956	

High-Air Performance Air Filter 4" Inlet (10.25 Dia x 11.7L)  
Yüksek Hava Performanslı Hava Filtresi 4 "Giriş (10.25 Dia x 11.7L)



Fiyat Kodu/ Price Code 1000946

Kod / Code	Measures 10.25" diameter x 11.7" long. Fits 4" Turbo/Inlet.Designed as a direct replacement for the stock paper air filter, the robust construction make it the ideal upgrade for your Cummins, John Deere or other marine diesel engine.
Part# 1000946	

High-Air Performance Air Filter 4" Inlet (8.5 Dia x 12.25L)  
Yüksek Hava Performanslı Hava Filtresi 4 "Giriş (8.5 Dia x 12.25L)



Fiyat Kodu/ Price Code 1000951

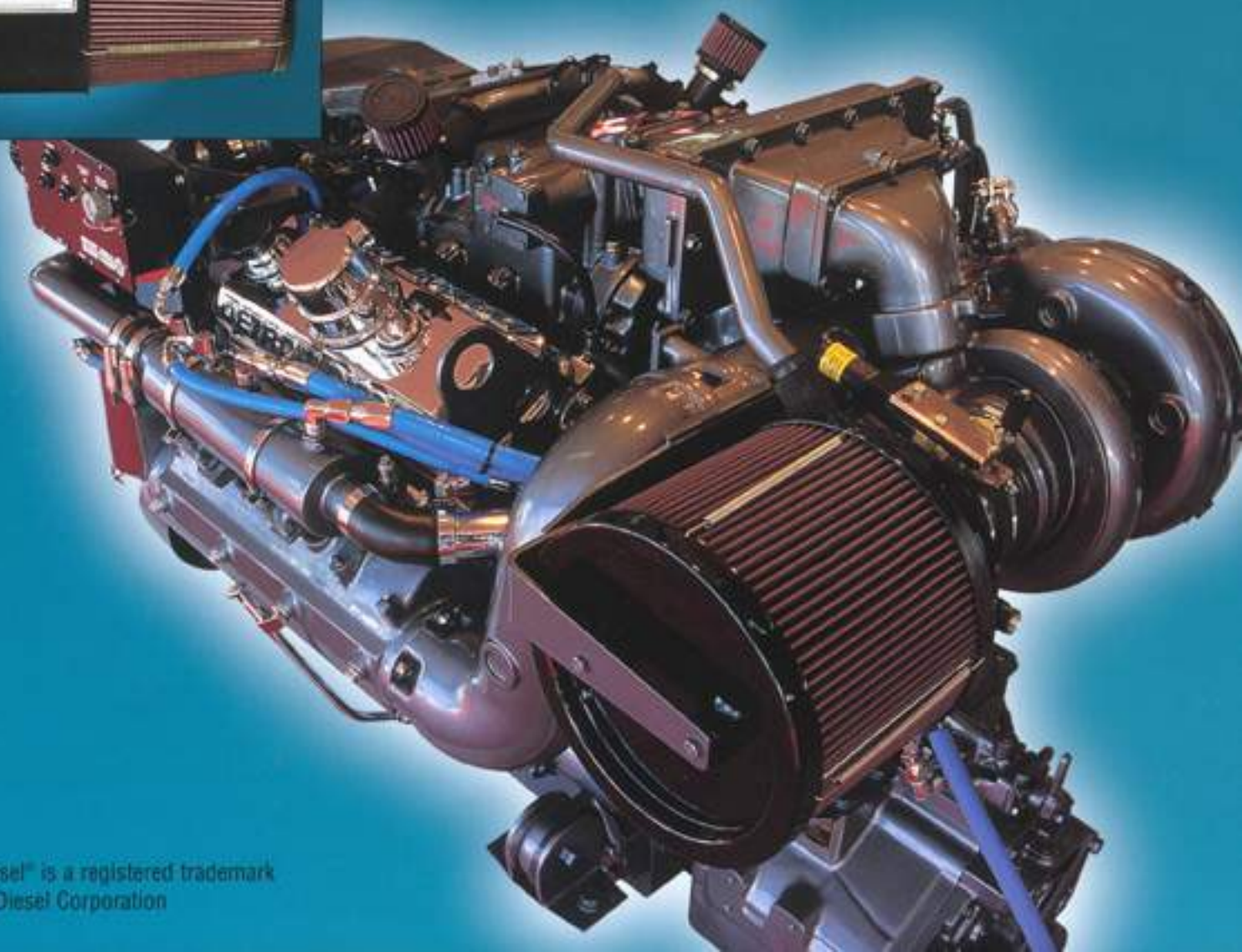
Kod / Code	Measures 8.5" diameter x 12.25" long. Fits 4" Turbo/Inlet. Ships with clamp.
Part# 1000951	

WALKER AIRSEP AIR FILTERS - WALKER AIRSEP HAVA FİLTRELERİ- CUMMINS





# The Only *No-Maintenance* Closed Crankcase Breather for Detroit Diesel® Engines.



Detroit Diesel® is a registered trademark  
of Detroit Diesel Corporation



# Typical AIRSEP® installation on Detroit Diesel® Engines



*AIRSEPS for your Detroit Diesel® engine are available with an optional built-in turbo silencer to dampen the high-pitched whine associated with most modern turbo-charged diesel engines.*

*All units include a high-quality, reusable marine air filter.*

## Easy-to-Install AIRSEP Kits for Detroit Diesel® Engines

AIRSEP Kits	DETROIT DIESEL® Engine Models
<b>NATURALLY ASPIRATED</b>	
KW471-N	471 Naturally Aspirated
KW6V53-N	6V53 Naturally Aspirated
KW6V71-N	6V71 Naturally Aspirated
KW8V71-N	8V71 Naturally Aspirated
KW12V71-N	12V71 Naturally Aspirated
<b>SINGLE TURBO</b>	
KW471-1	471 Single Turbo
KW8.2-1	8.2 Liter Single Turbo
KW6V53-1	6V53 Single Turbo
KW6V71-1	6V71 Single Turbo
KW6V92-1	6V92 Single Turbo
KW8V71-1	8V71 Single Turbo
KW8V92-1	8V92 Single Turbo
KW12V71-IN	12V71 Single Turbo
<b>DUAL TURBO</b>	
KW8.2-2	8.2 Litre Dual Turbo
KW6V53-2	6V53 Dual Turbo
KW6V71-2	6V71 Dual Turbo
KW6V92-2	6V92 Dual Turbo
KW8V71-2	8V71 Dual Turbo
KW8V92-2	8V92 Dual Turbo
KW12V71-2	12V71 Dual Turbo
<p><i>AIRSEP Kits are also available for other Detroit Diesel® engines, as well as older engines. Please contact Walker Engineering for pricing and availability of engines not listed.</i></p> <p><i>Note: Turbo/air inlet connection hoses are required for each kit. These hoses are listed on the accessory literature and are available for a nominal charge.</i></p> <p><i>See accessory parts sheet for turbo silencer kit numbers.</i></p>	

## The AIRSEP® Advantage...

The Walker AIRSEP Breathing System is the best closed-crankcase system available today. Unlike other breather systems on the marine market, the Walker AIRSEP is the only maintenance-free separator/breather that truly works! That is why Detroit Diesel® Corporation has made the Walker AIRSEP their exclusive breather as well as standard factory equipment on their marine diesels since 1990.

## Direct Benefits...

While eliminating oily crankcase breather discharge that may blow directly into your bilge and all over your engine room, the AIRSEP provides these great benefits —

- ▶ Helps reduce or eliminate seal leaks on older engines.
- ▶ No more oil in the bilge or noxious fumes.
- ▶ Saves oil and fuel consumption.
- ▶ Sustains engine r.p.m. performance.
- ▶ No more costly air filter elements to buy each year.
- ▶ Designed to work with the Walker AIRBOX DRAIN KIT—available separately.
- ▶ Helps avoid costly Coast Guard bilge fines.

**Kits for industrial generators and auxiliary engines are now available. Call your local Detroit Diesel®/AIRSEP dealer about a retrofit kit for your existing engine.**



**Walker Engineering Enterprises**  
 8321 De Celis Place • North Hills, CA 91343  
 Tel: (818) 895-7788 • FAX: (818) 895-7785  
[www.walkerairsep.com](http://www.walkerairsep.com)

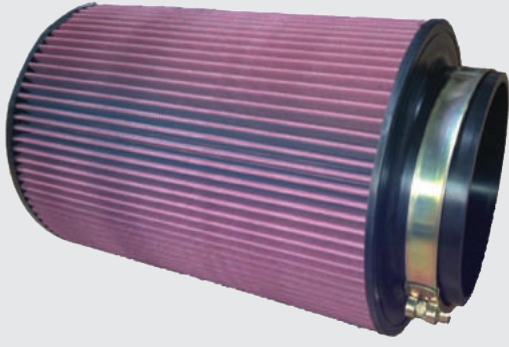


WE-DD-98





## Air Filter, High Performance MTU S2000 - H. Filtresi - Yüksek Perf.

Fiyat Kodu/  
Price CodeKod / Code  
Part# KW1002357-4Açıklama / Description  
Dims: 12" Diameter x 16" Long

## AIRSEP RECON Kit ( AIRSEP S2000 DDEC ) -Part# KWCCES2000-2



Fiyat Kodu/ Price Code KWCCES2000-2

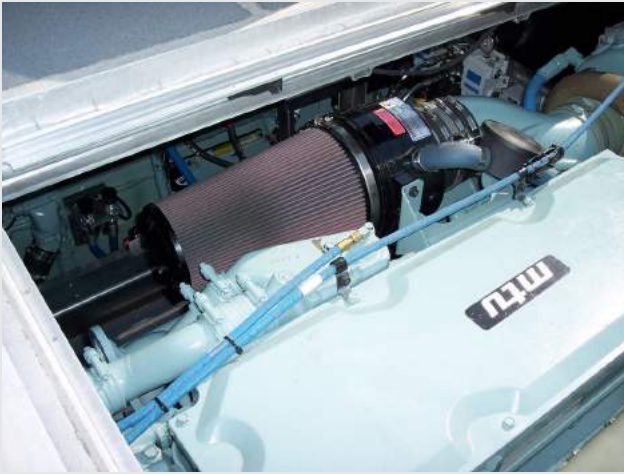
Kod / Code

Açıklama / Description

Part# KWCCES2000-2

Compatible with older DDEC or MDEC Series 2000 Marine engines, 12 or 16 cylinder.

## CCE FIELD SERVICE KIT 10" x 14" Tapered CCE Air Filter 2 PAK



MTU part# 23533125

Fiyat Kodu/  
Price Code  
1001139Kod / Code  
Kit # 1001139Açıklama / Description  
Each convenient (TWO-PAK) kit contains:  
Two (2) CCE 10" diameter x 14" Tall Air Filters

## CCE FIELD SERVICE KIT 12" AIRSEP COALESCER 2 PAK



Fiyat Kodu/ Price code 1000821

Kod / Code

Açıklama / Description

Part# 1000821

(Vacuum Regulator)

## FIELD SERVICE KIT 10" x 14" Traditional Tapered Air Filter 2 PAK- SERVİS KİTİ 10 "x 14" Geleneksel Konik Hava Filtresi 2 PAK



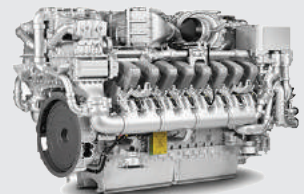
Fiyat Kodu/ Price Code Kit # 1001138

Kod / Code

Açıklama / Description

Kit # 1001138

This kit contains filter elements that are a direct replacement for (2) MTU air filters, MTU part# 23515202







# The Only Optional No-Maintenance Closed Crankcase Breather for MAN<sup>®</sup> Diesel Engines.



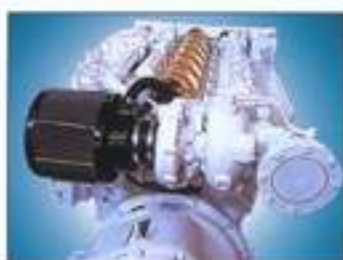
Engine shown with  
optional, dealer-installed  
AIRSEP system.

MAN<sup>®</sup> engines are  
standard with a MAN<sup>®</sup>  
closed-breather system.





MAN® Single Turbo 2866LE401



MAN® Dual Turbo 2842LE402



MAN® Dual Turbo 8cy, 10cy, 12cy

## The AIRSEP® Advantage...

The Walker AIRSEP Breathing System is the best closed-crankcase system available today. Unlike other breather systems on the marine market, the Walker AIRSEP is the only maintenance-free air-oil separator/breather that truly works! That is why all of the major diesel manufacturers have made the Walker AIRSEP their exclusive breather as standard factory equipment on most of their marine diesels.

The system is designed to work effectively with or without a MANN+HUMMEL style breather, making the system very easy to install.

## Direct Benefits...

Eliminating oily crankcase breather discharge that may blow directly into your engine intake or all over your engine room, the AIRSEP provides these great benefits —

- ▶ No more oil in the bilge or noxious fumes.
- ▶ Saves oil and fuel consumption.
- ▶ Sustains engine r.p.m. performance.
- ▶ No more costly air filter elements to buy each year.
- ▶ Helps reduce or eliminate seal leaks on older engines.
- ▶ Extends time between engine overhauls and aftercooler servicing.
- ▶ Helps avoid costly Coast Guard bilge fines.

*AIRSEP Breathers for your MAN engine are available with an optional built-in turbo silencer to damper the high-pitch whine associated with most modern turbo-charged engines, and a high-quality, reusable marine air filter.*

## Easy-to-Install AIRSEP Kits for MAN Engines

AIRSEP Kit No.	MAN® Engine Models
KWMAN66-1	2866LE401 (6 cyl.), Single turbo
KWMANV8-2	2848LE401 (8 cyl.), Dual turbo
KWMANV8800-2	2848LE401 (8 cyl.), Dual turbo (800HP)
KWMANV10-2	D2840LE401 (10 cyl.), Dual turbo, equipped with fuel cooler
KWMANV10-2-PI	D2840LE401 (10 cyl.), Dual turbo, <u>without</u> fuel cooler
KWMANV12-2	D2842LE402 (12 cyl.), Dual turbo, equipped with fuel cooler
KWMANV12-2-PI	D2842LE402 (12 cyl.), Dual turbo, <u>without</u> fuel cooler
<p><i>AIRSEP Kits are also available for other MAN Diesel engines, as well as older engines. Please contact Walker Engineering for pricing and availability.</i></p> <p><i>Note: Turbo connection hoses may be required for some older engine kits. These hoses are listed on the accessory literature and are available for a nominal charge.</i></p> <p><i>See accessory parts sheet for turbo silencer kits, parts, and air filter cleaning kits.</i></p>	

**Specify a Walker AIRSEP on your new MAN®-powered vessel...or call your local AIRSEP dealer about a retrofit kit for your existing engine.**



**Walker Engineering Enterprises**  
8321 De Celis Place • North Hills, CA 91343  
Tel: (818) 895-7788 • FAX: (818) 895-7785



WE-MN-56



EVERQUIET Air Filter Element - MAN 1550 - EVERQUIET Hava Filtresi Elemanı - MAN 1550 - (Part# 40-1132)



Fiyat Kodu/ Price Code Part# 40-1132

Kod / Code	Açıklama / Description
(Part# 40-1132)	Measures 11.5" Long Compatible with engines with over 700 HP. Direct Replacement For: MAN - US Retrofit (Walker Part # Only)

EVERQUIET Air Filter Silencer -MAN 1550 Marine Engine (Part# 90-1330) - EVERQUIET Hava Filtresi Susturucu -MAN 1550



Fiyat Kodu/ Price Code 90-1330

Kod / Code	Açıklama / Description
Part# 90-1330	Two (2) units required PER ENGINE

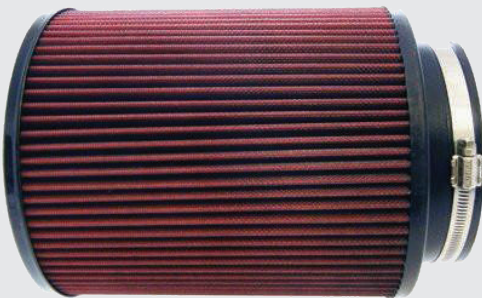
High-Air Performance Air Filter 5.9" Inlet - MAN (8.375 Dia x 11.4L) - Yüksek Hava Performanslı Hava Filtresi 5.9 "Giriş - MAN



Fiyat Kodu/ Price Code 1000917

Kod / Code	Açıklama / Description
Part# 1000917	Measures 8.375" diameter x 11.4" long.  Fits 5.9" Turbo/Inlet. Rated for most MAN marine diesel engines, except 1800HP V12.

High-Air Performance Air Filter- 1800HP MAN (8.375 Dia x 14L)- Yüksek Hava Performanslı Hava Filtresi - 1800HP MAN



Fiyat Kodu/ Price Code 1001555

Kod / Code	Açıklama / Description
Part# 1001555	Measures 8.375" diameter x 14" long. Fits 5.9" Turbo/Inlet. Rated for MAN 1800HP V12 marine diesel engines Direct Replacement for MAN# 51.08401-6013

## High-Air Performance Air Filter (Fits Volvo 74/75 Series) 4" Inle - Yüksek Hava Performanslı Hava Filtresi (Volvo 74/75 Serisine Uygun)



Fiyat Kodu/  
Price Code  
1001817

Kod / Code	Ölçü / Size	Açıklama / Description
Part# 1001817	4" Inlet	Measures 7.5" diameter x 11.7" long, and fits inside factory turbo connection hose

## High-Air Performance Air Filter -Volvo D3 -Part# 1001835



VOLVO D3 Stock Air Filter

WALKER D3 High Performance Air Filter

Fiyat Kodu/ Price Code 1001835

Kod / Code

Part# 1001835

Take YOUR diesel engine to the next level with this high performance air filter. Designed as a direct replacement for the Volvo stock foam air filter, the robust construction make it the ideal upgrade for your D3 Series Volvo marine engine.

## High-Air Performance Air Filter -Volvo KAMD/KAD -Part# 1000920



Fiyat Kodu/ Price Code 1000920

Kod / Code

Part# 1000920

Designed to fit in same space as stock filter. Measures 7" x 13.5". This flat filter fits: KAMD & KAD 42A, 42P, 43P 300 & 44P as well as MD30 and MD40 engines.

## High-Air Performance Air Filter -Volvo31/41 Series



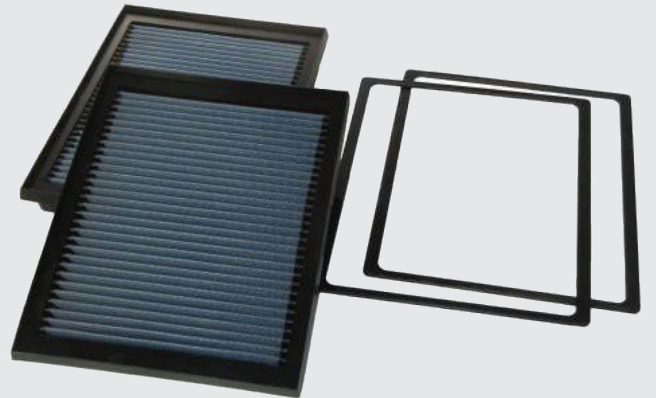
Kod / Code

Part# 1000919

Designed as a direct replacement for the Volvo stock paper air filter, the robust construction make it the ideal upgrade for your 31/41 Series Volvo marine engine.

Fiyat Kodu/ Price Code 1000919

## High-Air Performance Air Filter Kit ( Volvo D9) -Kit# KWWOLVOD9-AF2



Kod / Code

Kit# KWWOLVOD9-AF2

Fiyat Kodu/ Price Code KWWOLVOD9-AF2

Kit Includes two (2) high performance filters with adapter rings, and fits directly into plastic factory housing.

One (1) kit required for each engine.



## Walker "Spinbreather" Crankcase Breather for Volvo Diesels -Walker "Spin Breather" Volvo Diesels için Karter Havalandırma



Fiyat Kodu/ Price Code KW1002588-4

Direct Replacement for:

Volvo # 876069  
Volvo # 843736  
Fleetguard# AF26188

Kod / Cod	Açıklama / Description
Pak #KW1002588-4	Measures 3.25" diameter x 6.25" long, and fits factory breather port without any modifications.

## High-Air Performance Air Filter Kit (Volvo D4 &amp; D6) - Yüksek Hava Performanslı Hava Filtresi Kiti (Volvo D4 &amp; D6)



Fiyat Kodu/ Price Code KWWOLVO-IPSPERF-1

Kod / Code	Açıklama / Description
Kit# KWWOLVO-IPSPERF-1	The Walker air filter then fits into the same space as stock filter.Kit includes one (1) high performance air filter, and one silencer cover. One (1) kit required for each engine.



## OTHER DIESEL SMALL ENGINE GROUP - DİĞER DİZEL KÜÇÜK MOTOR GRUBU



AIRSEP Kit - Marine Gensets & Marine Engines  
up to 100HP -Kit # KWUG325-1



AIRSEP Kit - Mercrusier 1.7L -Kit # 90-1372



High Performance "Adapt-all" Air Filter7  
(Small Diesel Engines to 75HP)-Part# CD588



Kod / Code	Açıklama / Description
Kit # KWYAN4BY-1	The filter assembly helps reduce high frequency turbo noise by 2-5 dBa. Designed for reliability...and durability the Walker air filter element is corrosion resistant, to withstand the toughest marine environmental conditions.
Fiyat Kodu/ Price Code KWYAN4BY-1	

#### EVERQUIET Air Filter Silencer Kit - (6BY Yanmar Engine)



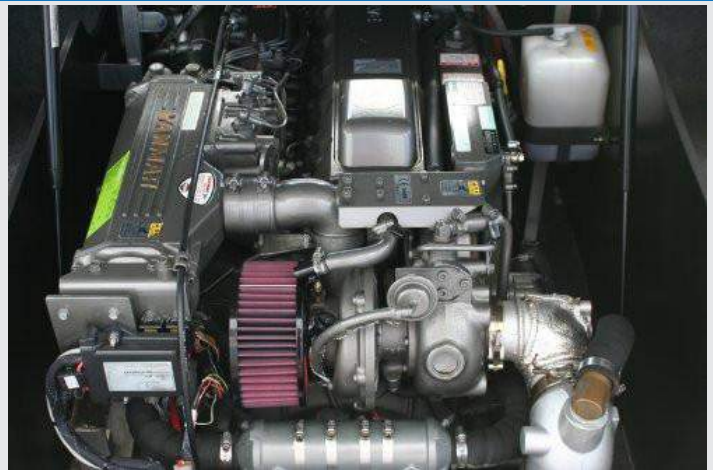
Fiyat Kodu/ Price Code KWYAN6BY-1

Kod / Code

Kit # KWYAN6BY-1

Incorporates a metal housing to fit in same space as stock filter. The filter assembly helps reduce high frequency turbo noise by 2-5 dBa.

#### High-Air Performance Air Filter for Yanmar 6LP -Part# 1000711



Fiyat Kodu/ Price Code 1000711

Kod / Code

Part# 1000711

Drops into the same space as the stock assembly.

Measures 7.7" diameter x 4.5" long.

#### High-Air Performance Air Filter for Yanmar 6LY-3



Kod / Code

6LY-3

Filter measures 7.8" diameter x 2.7" high.

Fiyat Kodu/ Price Code 6LY-3

#### High-Air Performance Air Filter for Yanmar 8LV -Part# 1001882



Kod / Code

Part# 1001882

Fiyat Kodu/ Price Code 1001882

Drops into the same space as the stock assembly. Measures 6.7" diameter x 3.2" long.

Each filter ships with adapter for stock crankcase vent hose.