



NORDHAVN  75



Saloon



Galley



Master Stateroom

Nordhavn 75 Expedition Yachtfisher

Nordhavn has taken what it does best, building long-range luxury expedition yachts, and incorporated all the fishing features and rigging found on tournament sportfishers to create the Nordhavn 75 Expedition Yachtfisher (EYF), a yacht that can truly go after any fish in the world. With one glance at the EYF, the discerning fisherman will instantly recognize what it is that makes for a great sportfishing boat: an enormous fishing cockpit, dual 60-gallon baitwells, a 35-cubic-foot deep freezer, plentiful gear and tackle storage, and all the rod holders and rigging a deep-sea angler could ever want.

But the N75 EYF is far more than your typical well-equipped sportfisher. At her heart, she is a heavily built, full displacement yacht meaning not only can she get to any ocean in the world, she can handle any condition that might be encountered along the way. She's safer in rough weather when sea states deteriorate and force a slower running speed, which is always a major downside to the typical small rudders found on sportfishers (and with the N75 EYF's standard stabilizers, she promises a comfortable ride even in bumpy seas).

The CAT C-18 diesel propels the EYF, and with the boat's 22'4" beam, customers can opt to go with a single or twin engine configuration based on preference.



Engine Room

Why not trade expensive high speed for high efficiency, quiet comfort, and the ability to explore the world's premier fishing spots at your own pace? The EYF's 3,000-nm range allows you to do just that. A proper long-distance sportfishing boat can take you to white sand beaches, coral towers and fish that have never heard a boat's propeller or seen a plastic bait - the type of aggressive fish that snap without a second thought.

And unlike your average sportfish yacht, the N75 EYF can be loaded down - free of weight concerns - with dive equipment, jet skis, and anything else needed for fishing adventures that last months, not hours.

While spending all that time at sea, the enormous interior capacity affords a whole lot of fishermen to find their own spot to relax amongst magnificent surroundings set off by the finest hardwoods, granite and stone, and whatever other custom touches an owner desires. Like all Nordhavn yachts, the N75 EYF is a truly semi-custom boat. The interior can be designed to match individual tastes and lifestyle.

The Nordhavn 75 Expedition Yachtfisher could quite possibly be the ultimate sportsman's magic carpet. Not only is she capable of transport to any fishing ground in the world, she carries with her the ability to provide the most extreme water sports adventure of a lifetime.

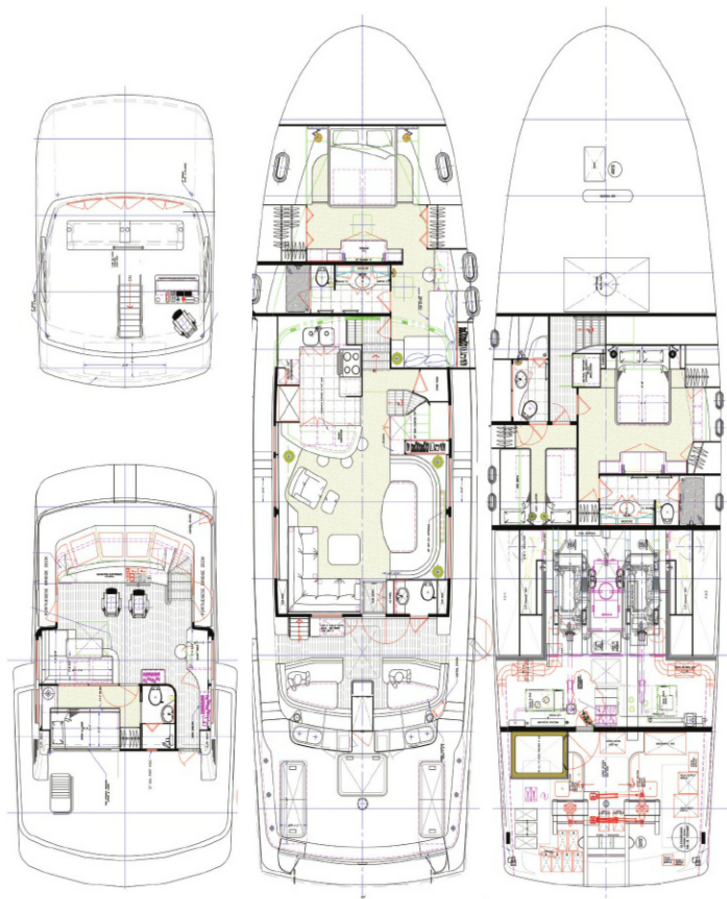


Aft Deck



Aft Cockpit





Specifications:

LOA:
74' 5" / 22.68 M

AIR DRAFT:
34' 0" / 10.36 M

LWL:
66' 8" / 20.32 M

FLYBRIDGE:
Standard

BEAM:
22' 4" / 6.81 M

BUILDER:
South Coast, China

DRAFT:
6' 11" / 2.11 M

DISPLACEMENT:
260,000 lbs. / 117.93 MT

ENGINE:
CAT C-18 [twin]

WATER CAPACITY:
600 US gals. / 2,271 L

FUEL CAPACITY:
4,540 US gals. / 17,186 L

HOLDING TANK CAPACITY:
240 US gals. / 909 L

GRAY WATER TANK CAPACITY:
240 US gals. / 909 L

*Specifications subject to change without notice and at the discretion of designers and builders.

**Dimensions are subject to change with Buyer's selected options and personal effects which may add to displacement and increase both draft and waterline length.



Follow us on
Facebook and Twitter



Visit the N75
on Nordhavn.com